



## BIHC COFFEE SCHOOL Specialty Coffee Association Program Fees

Before you start the courses, you will need to become an SCA member.

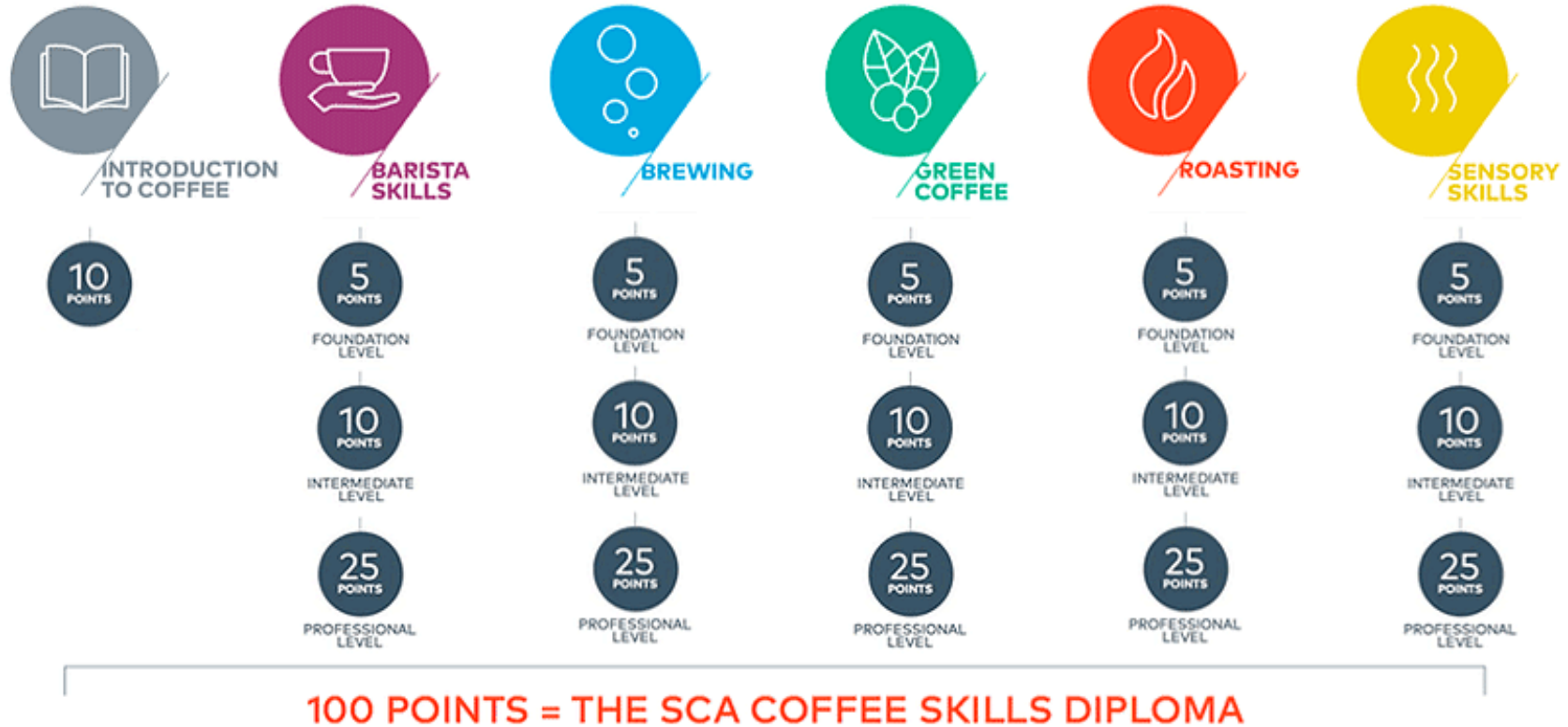
Go to [www.SCA.coffee](http://www.SCA.coffee) to see advantages of becoming a member, then go to <https://scae.com/registration> to become a member and pay half price for your certification.

Our SCA certification fees are for SCA members.

Before applying for the course fill this form <https://www.bihc.ac.ke/Ask>

You will be asked to pay the BIHC APPLICATION FEES PER COURSE – **Ksh2500 / €21**, while we review your application.

	FOUNDATION			INTERMEDIATE			PROFESSIONAL		
	Live Tuition	Online Tuition	SCA Certification	Live Tuition	Online Tuition	SCA Certification	Live Tuition	Online Tuition	SCA Certification
<b>Introduction to Coffee</b>	Ksh7000 €60	Ksh5600 €48	Ksh8000 €60						
<b>Barista Skills</b>	Ksh8000 €65	Ksh6400 €55	Ksh8000 €60	Ksh30000 €240	Ksh24000 €193	Ksh15000 €100	Ksh50000 €400	Ksh40000 €320	Ksh25000 €180
<b>Brewing</b>	Ksh8000 €65	Ksh6400 €55	Ksh8000 €60	Ksh30000 €240	Ksh24000 €193	Ksh15000 €100	Ksh50000 €400	Ksh40000 €320	Ksh25000 €180
<b>Roasting</b>	Ksh12000 €100	Ksh9600 €80	Ksh8000 €60	Ksh30000 €240	Ksh24000 €193	Ksh15000 €100	Ksh50000 €400	Ksh40000 €320	Ksh25000 €180
<b>Green Coffee</b>	Ksh12000 €100	Ksh9600 €80	Ksh8000 €60	Ksh30000 €240	Ksh24000 €193	Ksh15000 €100	Ksh50000 €400	Ksh40000 €320	Ksh25000 €180
<b>Sensory Skills</b>	Ksh12000 €100	Ksh9600 €80	Ksh8000 €60	Ksh30000 €240	Ksh24000 €193	Ksh15000 €100	Ksh50000 €400	Ksh40000 €320	Ksh25000 €180
<b>Coffee Sustainability</b>	Ksh42000 €335		Ksh8000 €60						



If you want to start and/or continue your SCA education, we would like to give you 3 recommendations!

1. Wait 3 months between each level on the same module, in order to practice your new knowledge.
2. Avoid jumping foundation courses, as they are highly valuable to understand crucial points in intermediate and professional courses.
3. If you fail, it is all right; you are allowed to retake the exam, special conditions may apply.

Each certification will award you points towards your SCA diploma.  
Once you reach 100 point you will get your Coffee Skills Diploma